


修頓中心無障礙設施指引

Guide on Barrier-free Facilities at Southern Centre

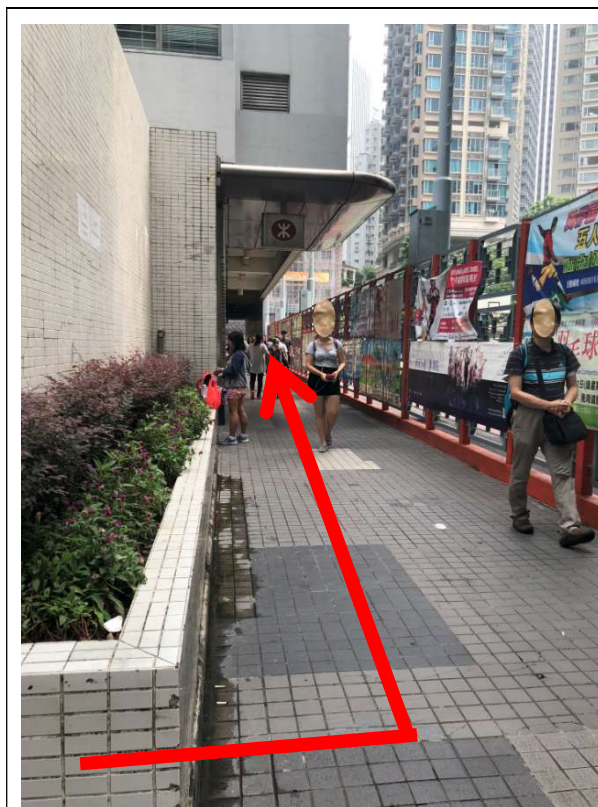
(I) 無障礙通道照片及指示

Photos and Guide on Barrier-free Facilities

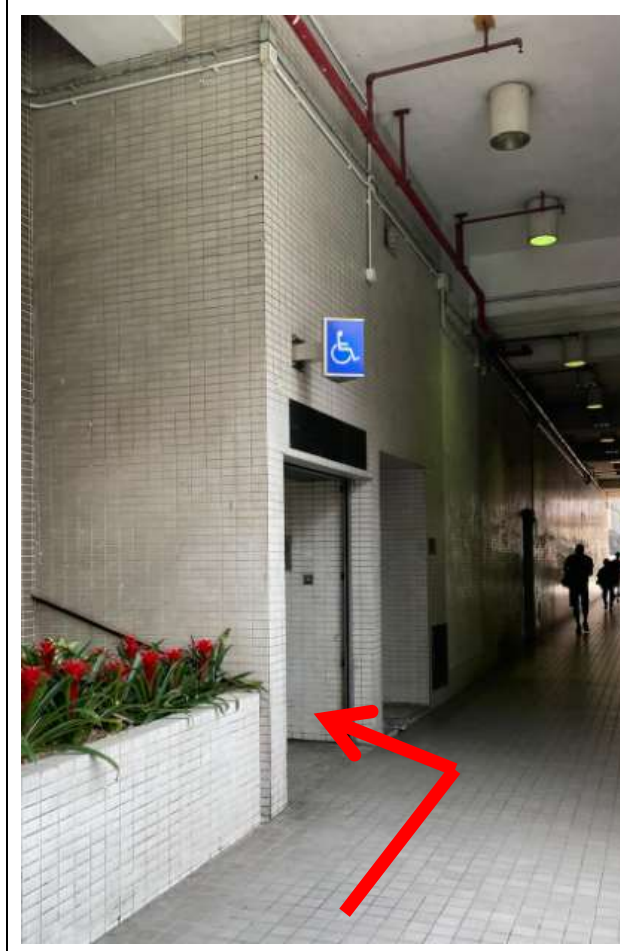
	<ul style="list-style-type: none">● 修頓中心正門右邊牆上張貼的指示；● 依從指示方向前往修頓球場旁的無障礙通道入口（配備斜道及升降機）；或● 按門鈴向修頓中心管理處尋求協助；或● 致電關愛基金秘書處 (2835 1301) 尋求協助 <ul style="list-style-type: none">● A notice can be found on the right hand side of the main entrance of Southern Centre (SC);● follow the directional sign to access the barrier-free entry of the building (with facilities such as ramps and lift) next to the Southern Playground; or● press the doorbell to seek help from the Building Management Office (BMO) of SC; or● call the Community Care Fund (CCF) Secretariat (2835 1301) for assistance
------------------------------------------------------------------------------------	---------------------------------------------------------------------------------------------------------------------------------------------------------------------------------------------------------------------------------------------------------------------------------------------------------------------------------------------------------------------------------------------------------------------------------------------------------------------------------------------------------------------------------------------------------------------------------------------------------------------------------------------------------------------------------------

修頓中心無障礙設施指引

Guide on Barrier-free Facilities at Southern Centre



- 沿修頓球場旁的通道向前行
- Walk along the pathway next to the Southern Playground



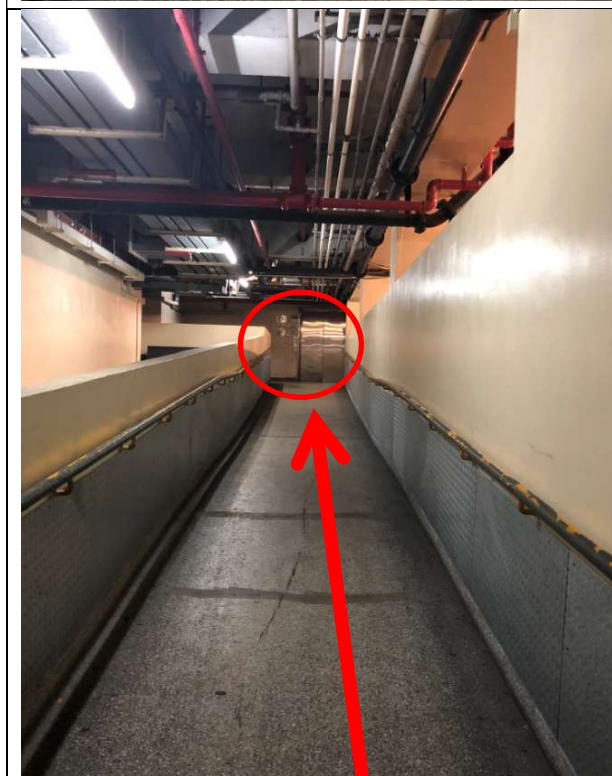
- 抵達無障礙通道入口
- Arrive at the barrier-free access entrance

修頓中心無障礙設施指引

Guide on Barrier-free Facilities at Southern Centre



- 沿斜道直行左轉
- Move along the ramp and turn left



- 沿斜道前行到盡頭，乘搭升降機
- Take the lift at the end of the ramp

修頓中心無障礙設施指引 Guide on Barrier-free Facilities at Southern Centre



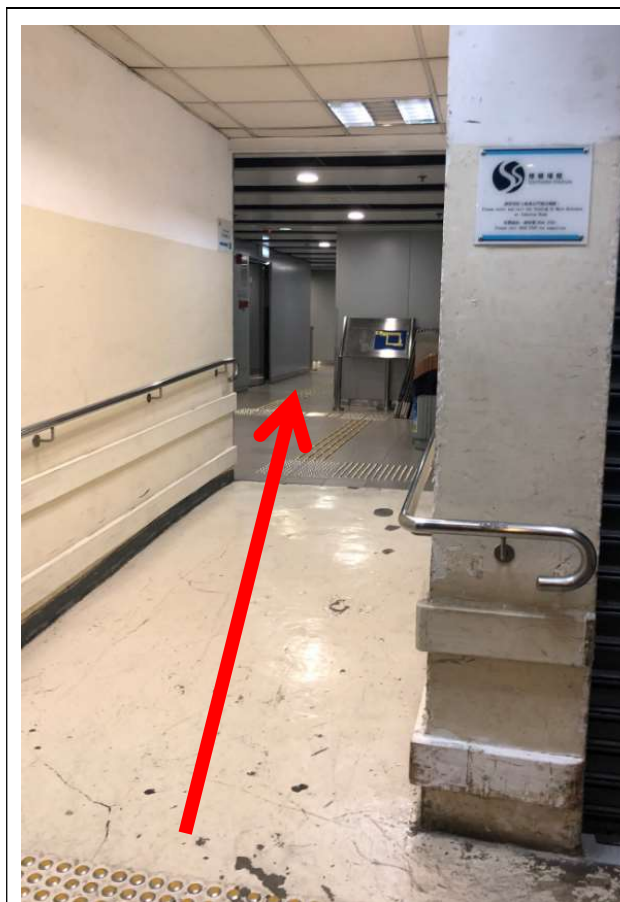
- 乘搭此升降機往 1 樓修頓中心升降機大堂，再轉搭另一部升降機至 4 樓關愛基金秘書處
- Take this lift to the lift lobby of SC on 1/F, and then take another lift to reach the CCF Secretariat on 4/F



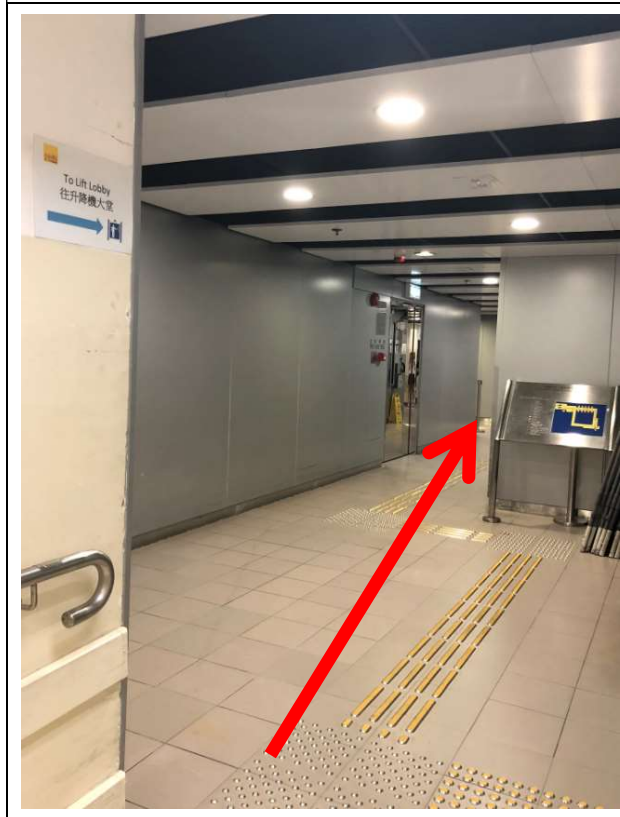
- 按“1”往升降機大堂
- Press “1” to the lift lobby

修頓中心無障礙設施指引

Guide on Barrier-free Facilities at Southern Centre



- 離開升降機後向前行
- Walk forward after leaving the lift



- 直行至走廊盡頭後左轉
- Turn left at the end of the corridor

修頓中心無障礙設施指引 Guide on Barrier-free Facilities at Southern Centre



- 到達修頓中心的升降機大堂
- Arrive at the lift lobby of SC



- 使用通往 2-15 樓並貼有輪椅使用者標誌的升降機，按“4”前往關愛基金秘書處
- Take the lift with a signage of wheelchair user leading to 2-15/F, and press “4” to the office of the CCF Secretariat

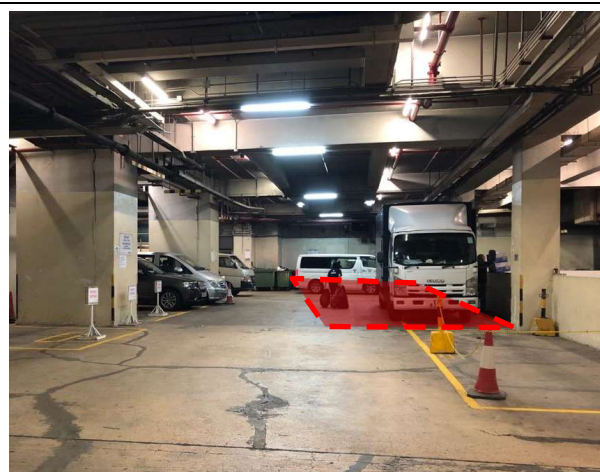
修頓中心無障礙設施指引

Guide on Barrier-free Facilities at Southern Centre

其他資訊 Other Information



- 修頓中心地下的無障礙通道內設有殘疾人士洗手間
- The disabled toilet is on the G/F of SC along the barrier-free access pathway



- 殘疾人士可按修頓中心停車場職員指示，在指定位置（紅色範圍）上落客或短暫停泊車輛
- Persons with disabilities may use the designated area (coloured in red) for pick-up/drop-off or temporary parking under the direction of carpark staff at SC

修頓中心無障礙設施指引

Guide on Barrier-free Facilities at Southern Centre

(II) 接待殘疾人士的安排

Arrangement for Receiving Persons with Disabilities (PWDs)

- (i) 到訪修頓中心的殘疾人士可向管理處職員登記資料，包括目的地及所需協助。如有需要，管理處職員會聯絡無障礙主任作進一步協助。
PWDs visiting SC may register with the BMO staff and provide information on the destination and assistance required. The BMO staff will then contact the Access Officer for further assistance, where appropriate.
- (ii) 到訪修頓中心關愛基金秘書處的殘疾人士亦可直接致電關愛基金秘書處 (2835 1301) 尋求協助。
PWDs visiting CCF Secretariat at SC may also call the CCF Secretariat office (2835 1301) direct for assistance.
- (iii) 如接獲有關無障礙通道和設施事宜的意見／建議／投訴，修頓中心管理處職員／關愛基金秘書處人員須向無障礙主任報告，以作適當跟進。
Upon receipt of views/suggestions/complaints on accessibility of the premises and facilities related matters, the BMO staff and CCF Secretariat staff should report to the Access Officer for suitable follow up actions.

(III) 疏散安排

Evacuation plan

關愛基金秘書處人員須立刻通知修頓中心管理處 (2835 2097) 無能力自行撤離的殘疾人士的具體位置，以便管理處職員向警方和消防處尋求協助。

The CCF Secretariat staff should notify the BMO (2835 2097) immediately the exact location of the PWD who is unable to leave the premises by his/her own, so that the BMO can seek help from the Police and Fire Services Department.

修頓中心無障礙設施指引

Guide on Barrier-free Facilities at Southern Centre

(IV) 有關無障礙通道和設施事宜的聯絡方式

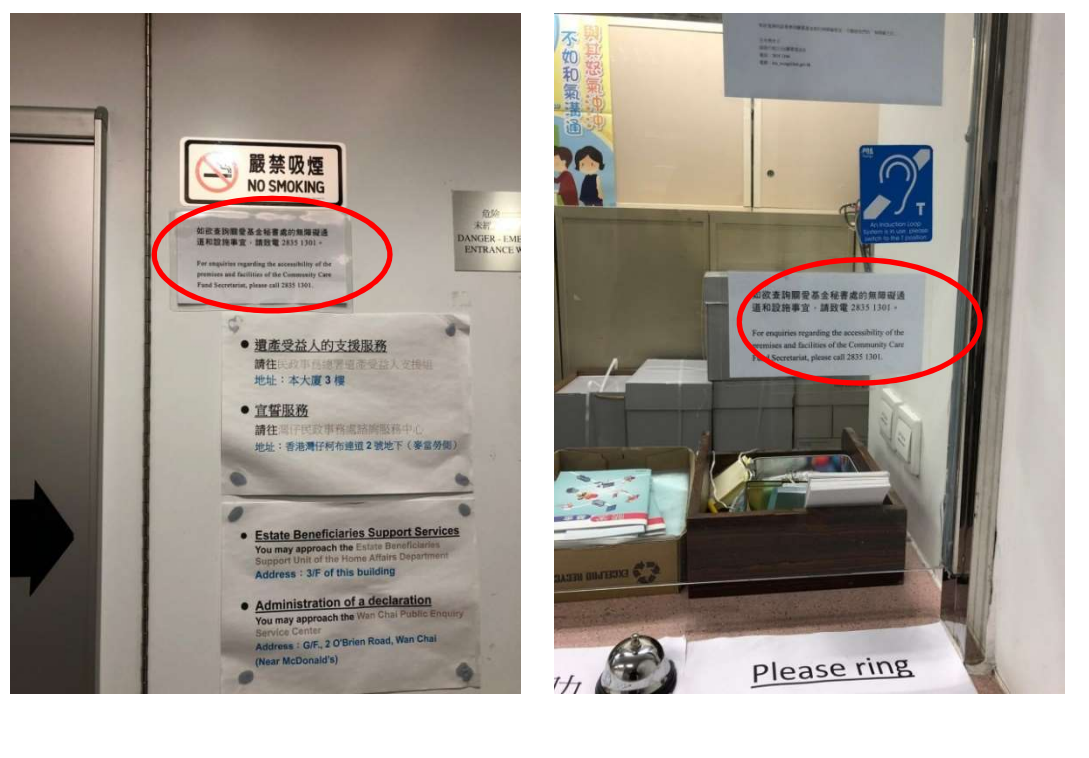
Contact Information on accessibility of the premises and facilities matters

有關聯絡資料已交予修頓中心管理處、張貼於關愛基金秘書處入口及接待處，及於民政及青年事務局和基金秘書處網頁公布。

The contact information has been passed to the BMO of SC, posted at the entrance and the reception counter of the CCF Secretariat, and promulgated to the public via the Home and Youth Affairs Bureau and CCF websites.

關愛基金秘書處入口及接待處

At the entrance and the reception counter of the CCF Secretariat



關愛基金秘書處

2022 年 7 月

The Community Care Fund Secretariat

July 2022